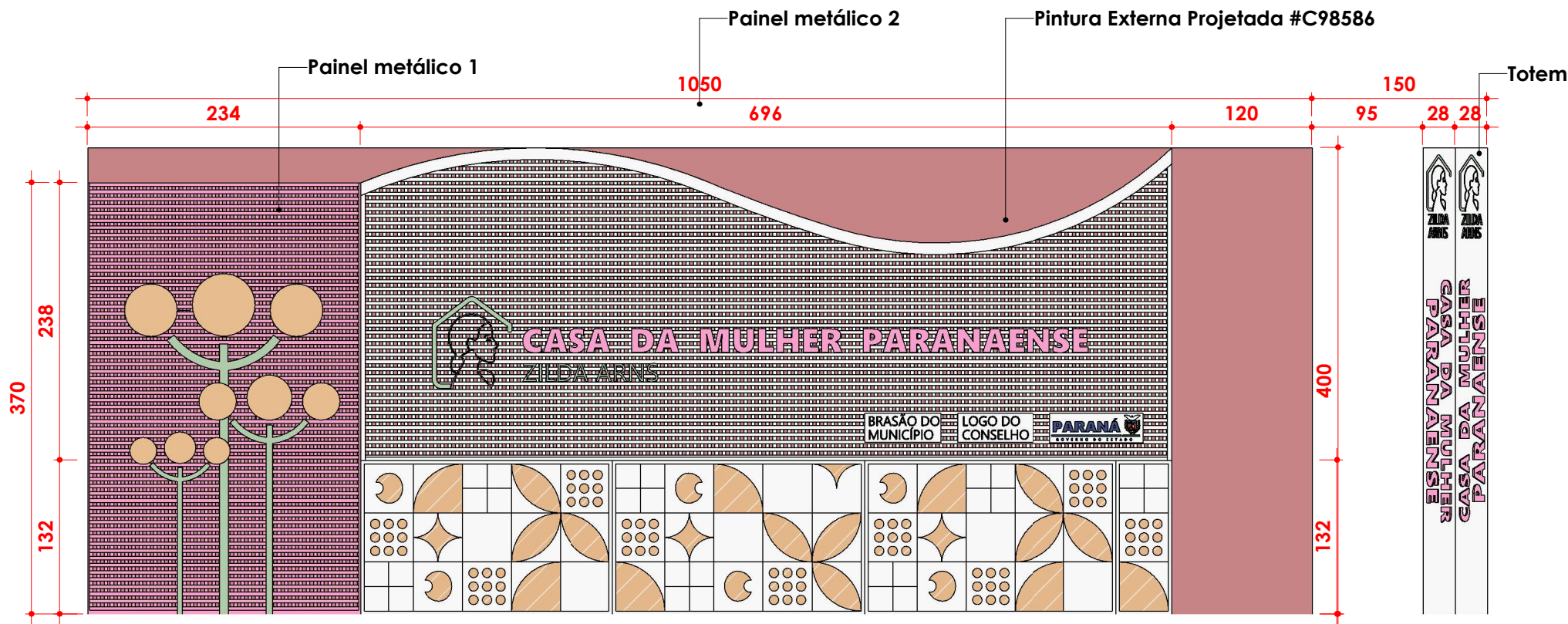
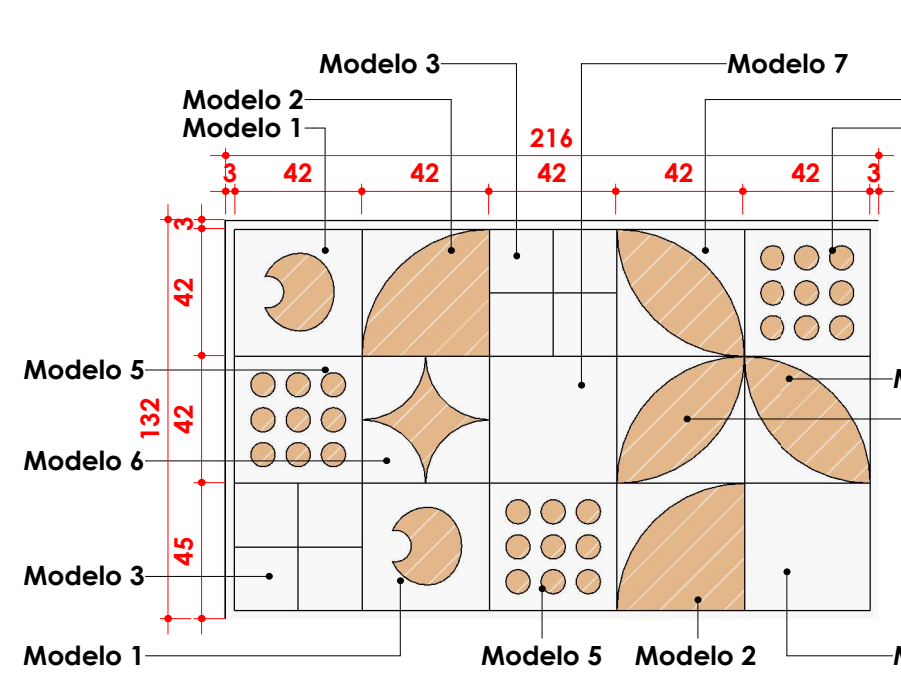


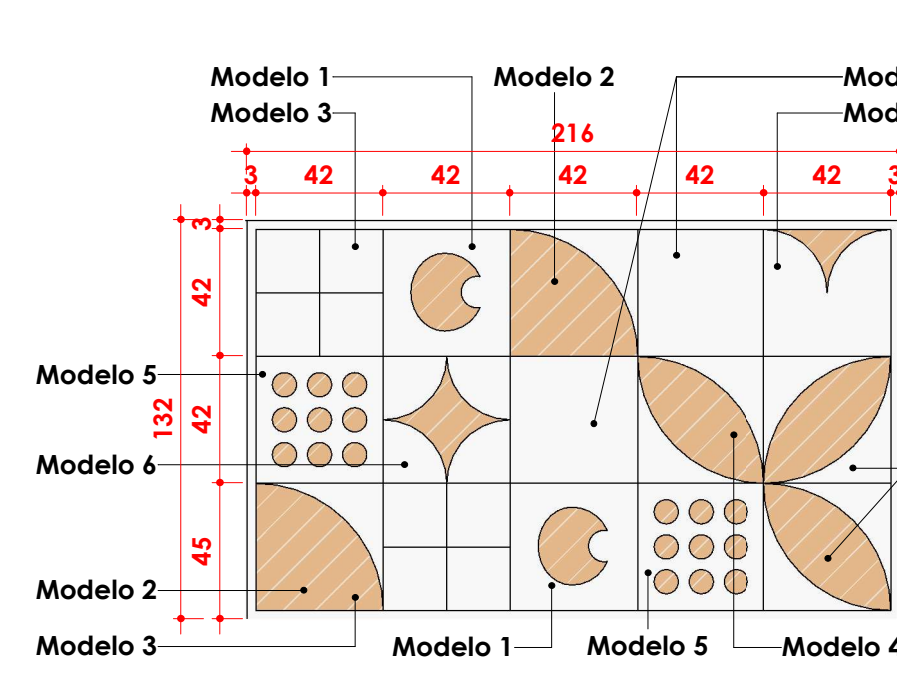
2 FACHADA - PAINÉIS 1:50



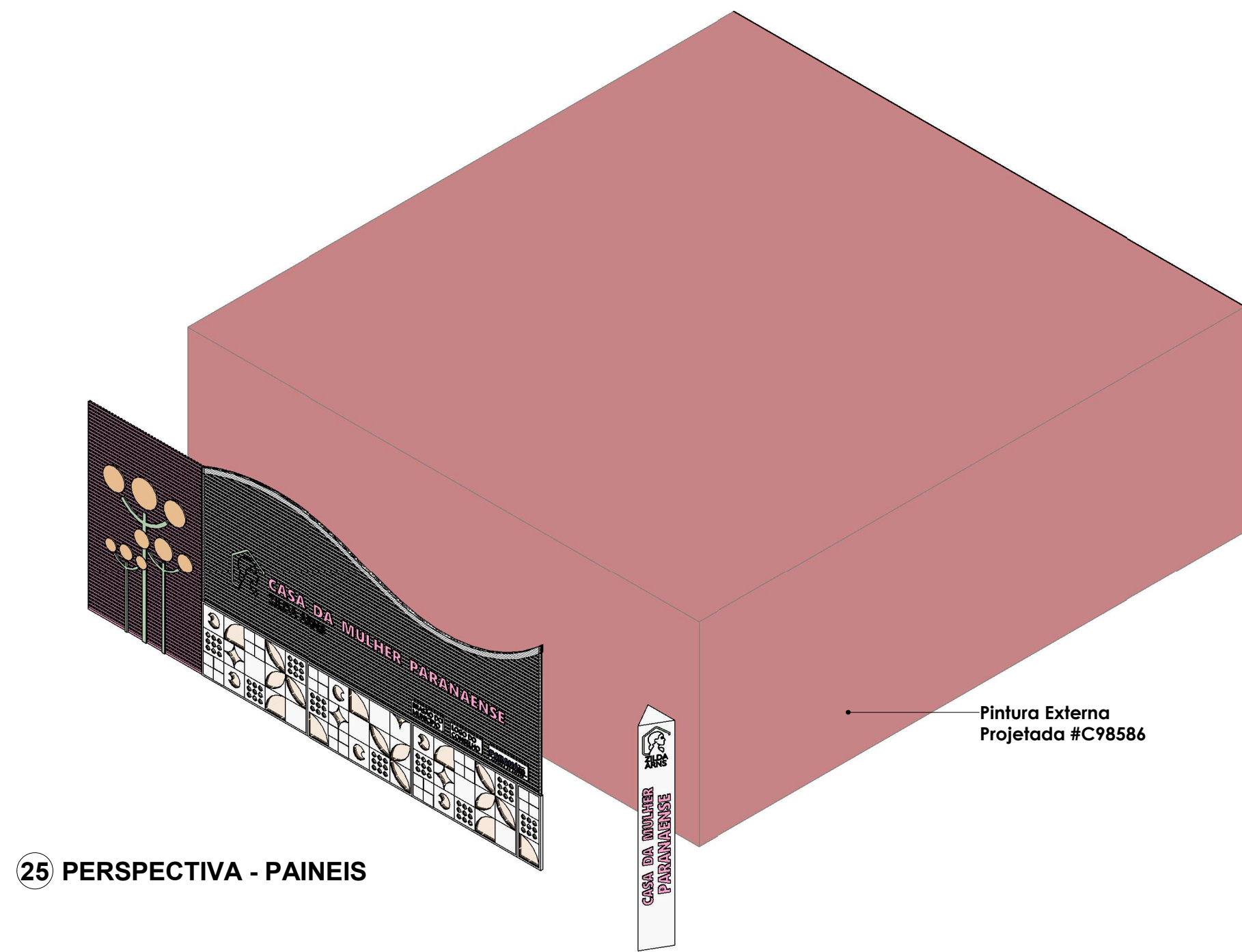
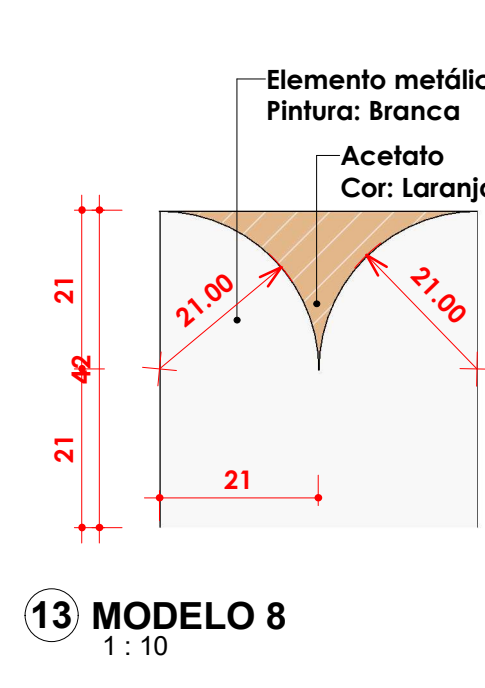
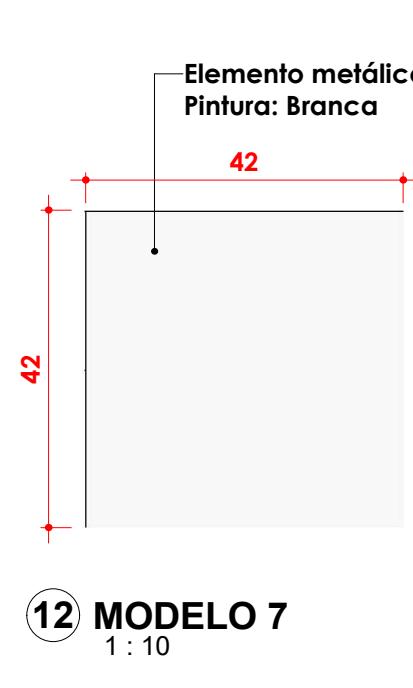
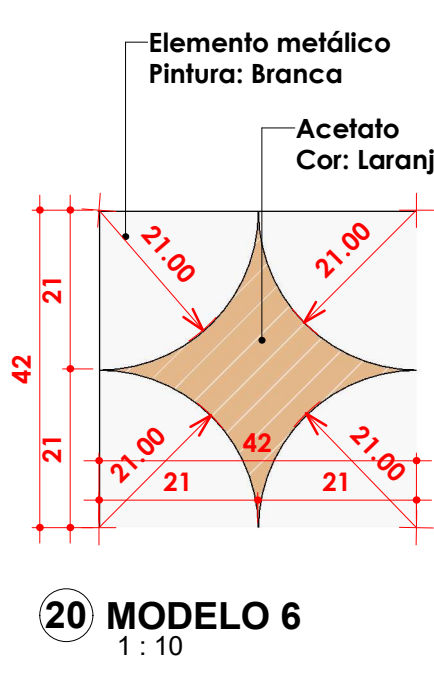
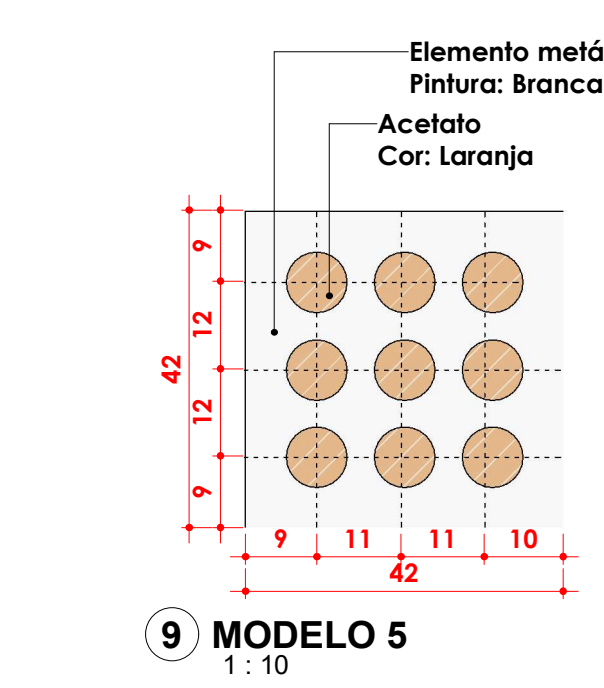
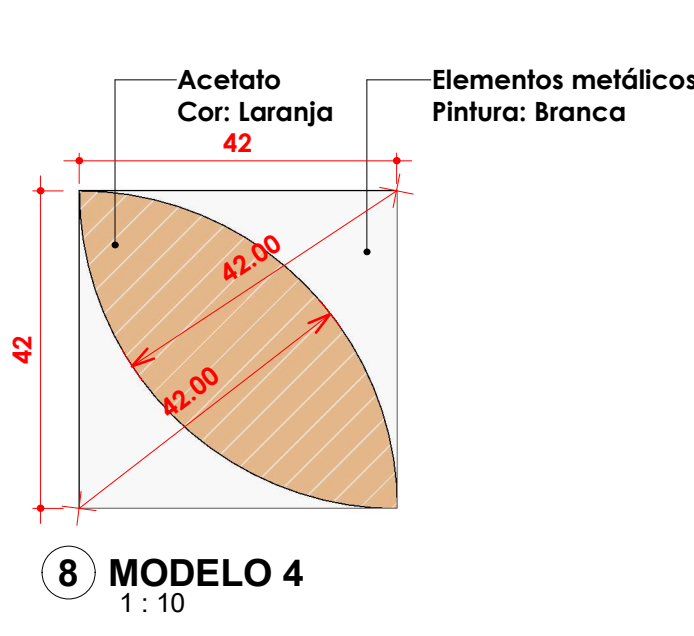
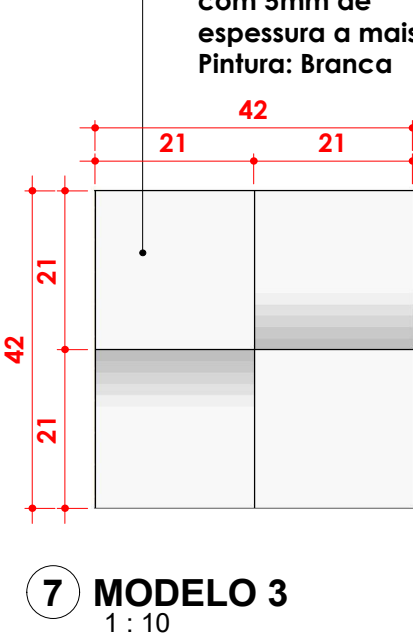
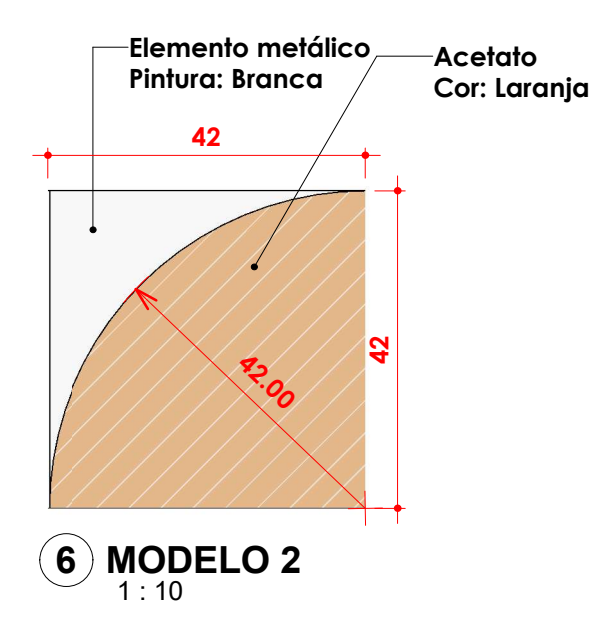
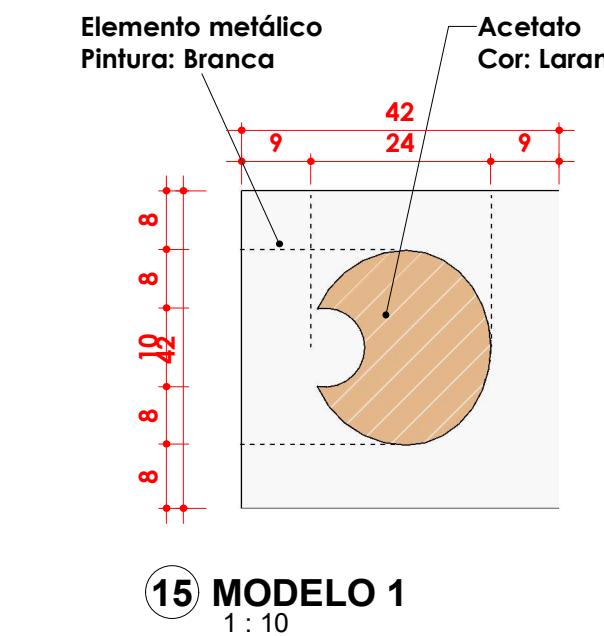
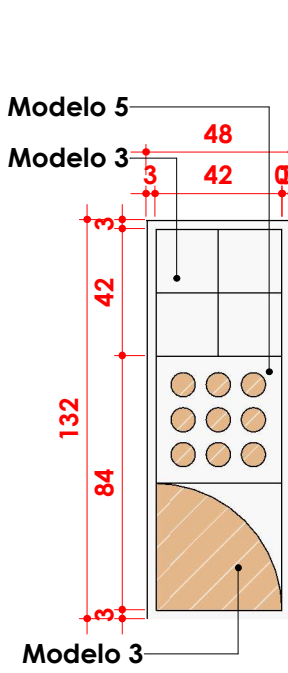
10 PAINEL 3 - MÓDULO 1 1:25



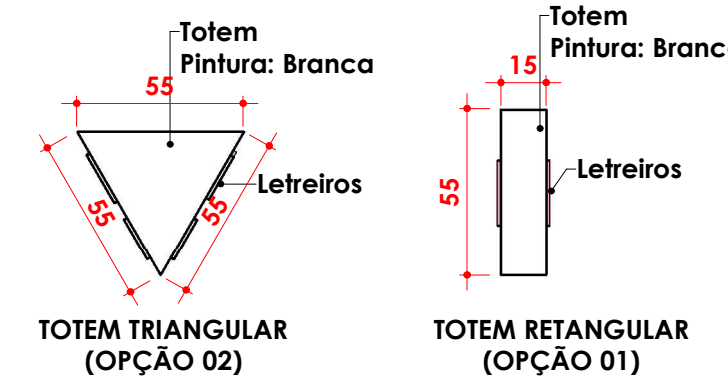
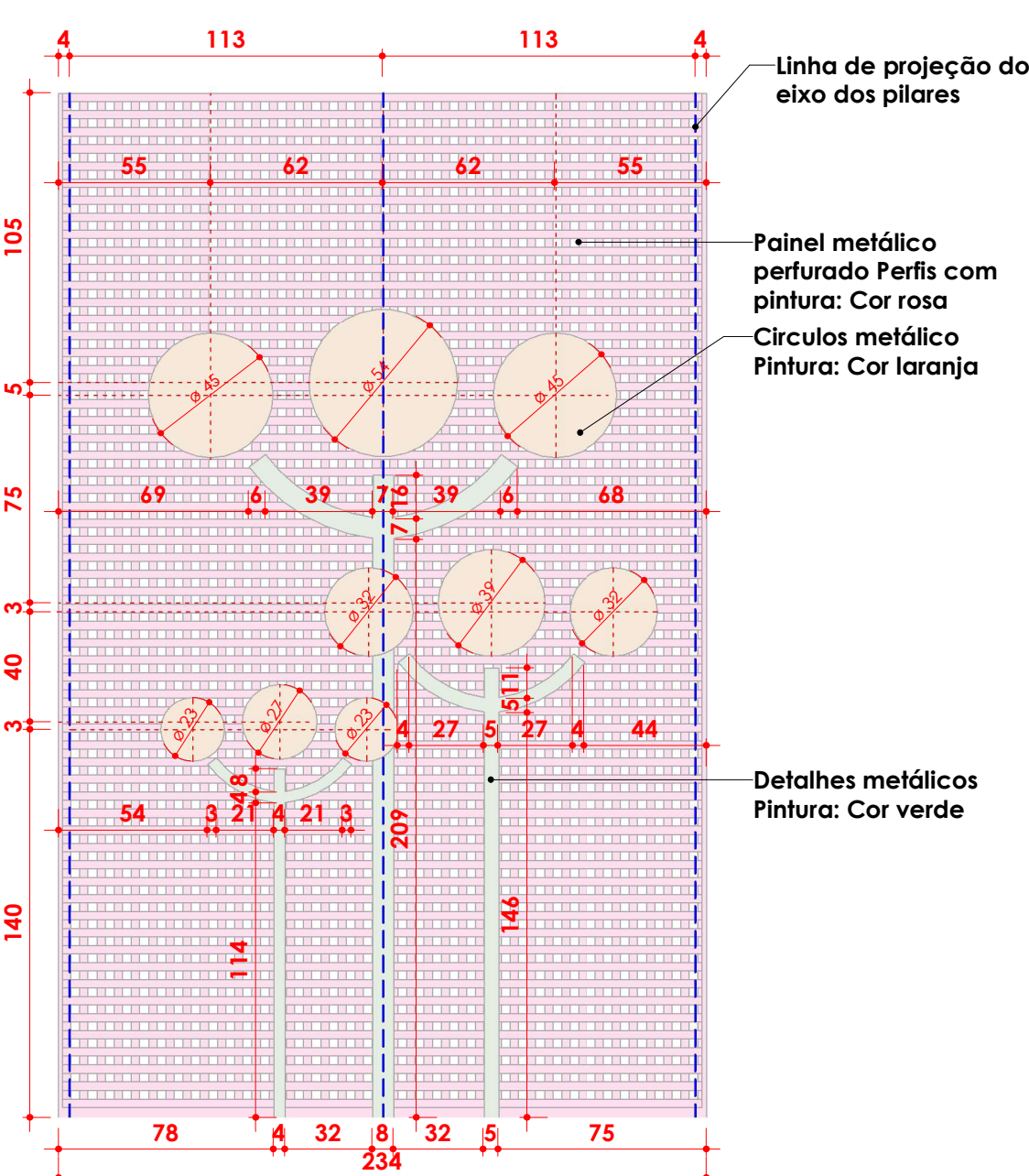
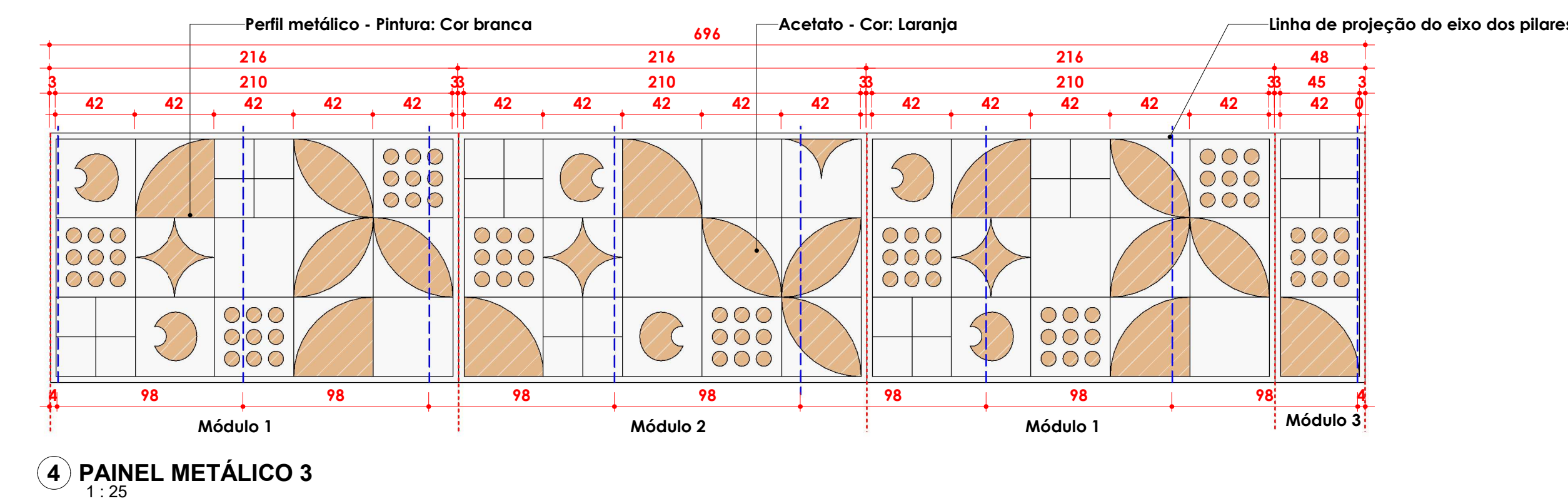
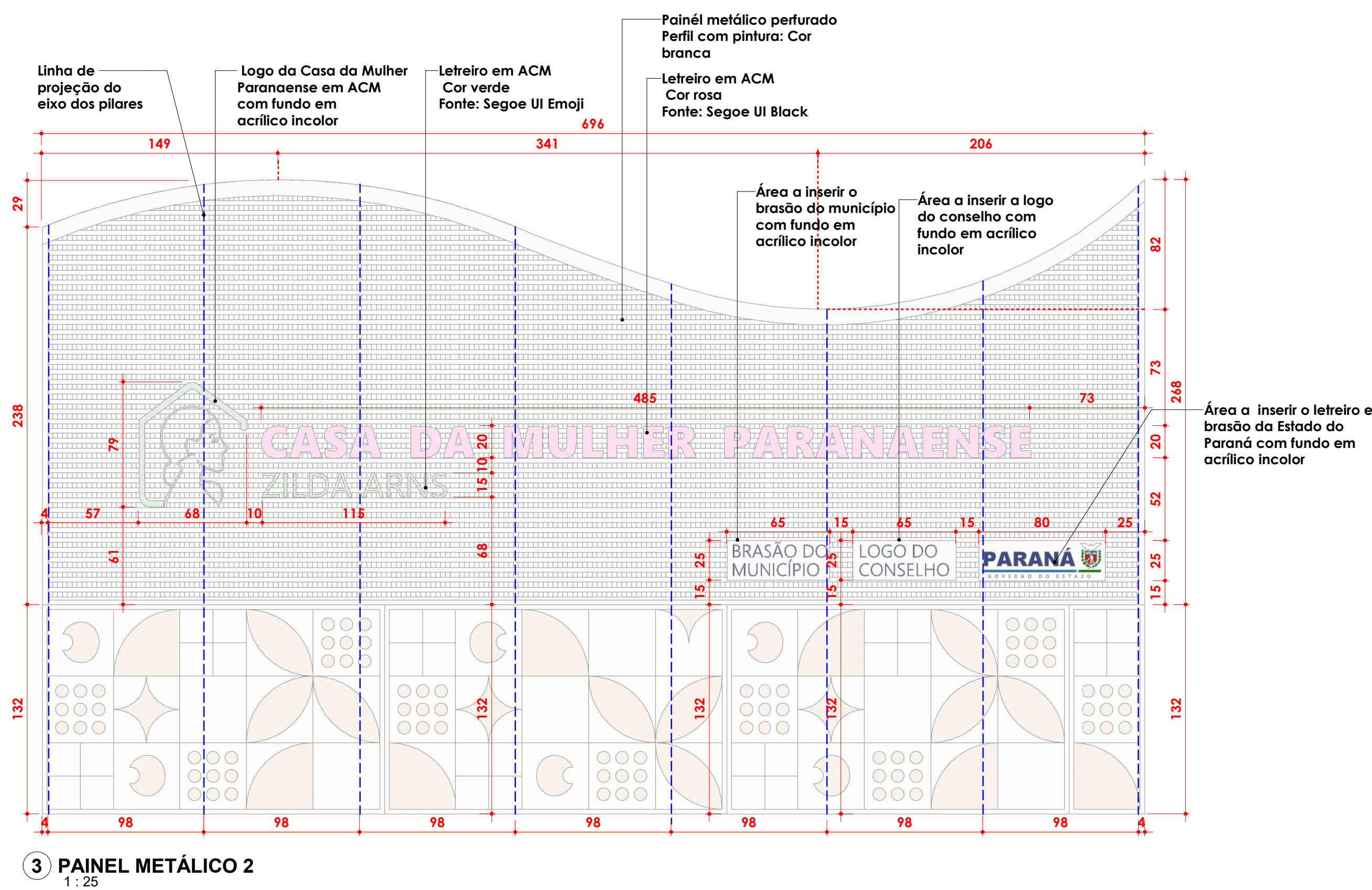
11 PAINEL 3 - MÓDULO 2 1:25



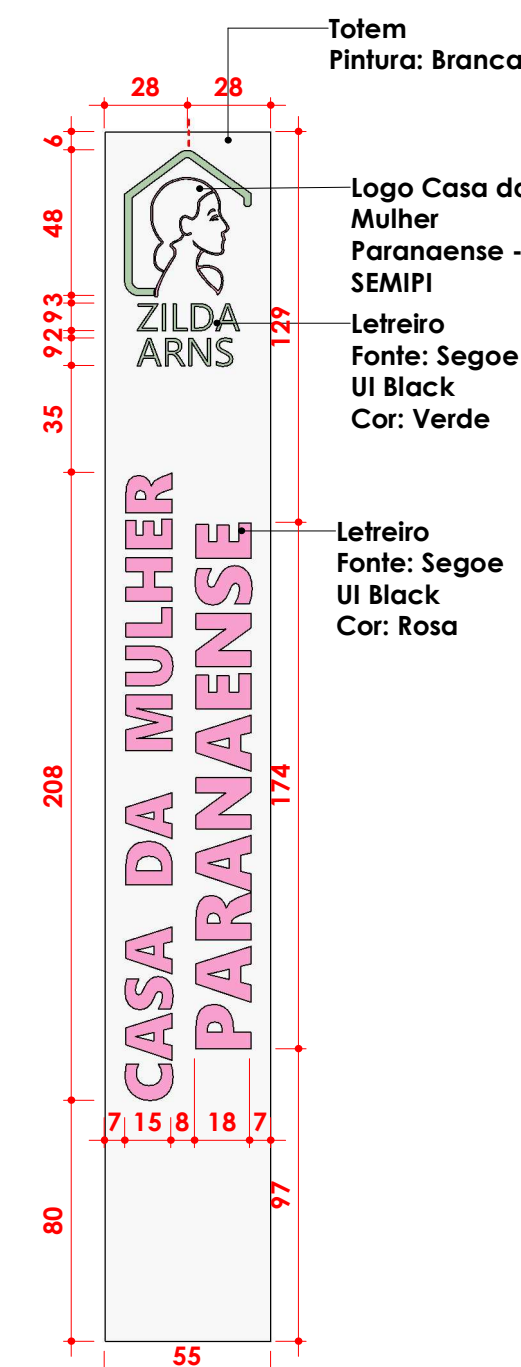
14 PAINEL 3 - MÓDULO 3 1:25



25 PERSPECTIVA - PAINÉIS



23 TOTEM - PLANTA 1:25



24 TOTEM - VISTA 1:25



PERSPECTIVA SEM ESCALA

		PROJETEK PARANÁ Escritório Regional de Engenharia, Arquitetura e Urbanismo		
Projeto: ARQUITETÔNICO				
CASA DA MULHER PARANAENSE				
Órgão Solicitante: SEMIPI - Secretaria de Estado da Mulher, Igualdade Racial e Pessoa Idosa		Geovana Buri Leite CAU: A315075-8		
Conteúdo da prancha: Fachada		Sabrina Babes		
Desenhista:				
R01		SEMIPI CNPJ: 48.179.415/0001-63		Prancha: 01/01
Data: 28/04/2025 16:43:59		Como indicado		